

Instructions: Star Pendant Lamp



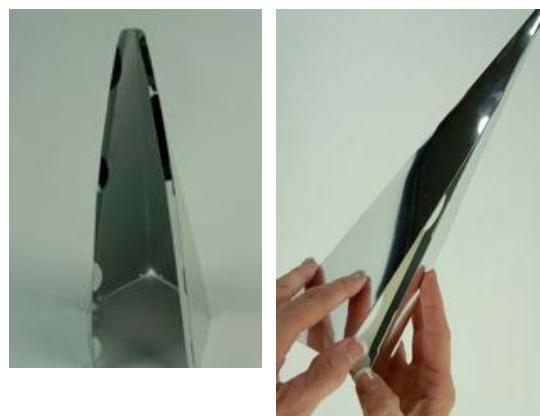
1. Gather all components:

(14 x (A) Cone Pieces (where all cone sides have 2 holes near base) , 4 x (B) Cone Pieces (where one side of cone has 3 holes near base), Bag Plastic Pins, 1 x Suspension Set , 1 x Internal Support Frame)



2. Put aside 1 x (A) cone piece.

Assemble all other cones pieces, by firstly bending sides along score lines including the score lines near edges. Then inserting tongues through grooves to close. Right side of cone will face out.



- ## 3. Select 1 x (A) and 1 x (B) cone pieces. Facing right sides together, align sides with 2 holes, join using plastic pin. NB. Head and tip of plastic pin need to be on inside of respective cones.



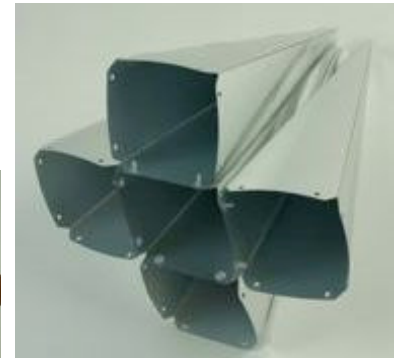
- ## 4. Alternating, join 3 x (A) and 3 x (B) cone pieces to those joined in Step 3 using plastic pins. Complete “middle section” ring by joining free sides of an (A) and (B) Piece. NB. Ensure that each (B) Piece is joined with “3 holes side” facing up. Set aside.



Instructions: Star Pendant Lamp



5. **Select 5 x (A) cone pieces . Choose a “central” cone. Join a cone to each side using 2 x plastic pins per side to form “base section of star” pendant. Set aside.**



6. **Position “Support Frame” onto suspension set and secure in place with lamp holder as demonstrated. Insert globe.**



7. **Wrap “unassembled cone” around suspension set as shown. Close using tongue and groove.**



8. **Using “suspension set” cone as central cone repeat Step 5 with last 4x (A) cone pieces to form “upper section of star” pendant.**



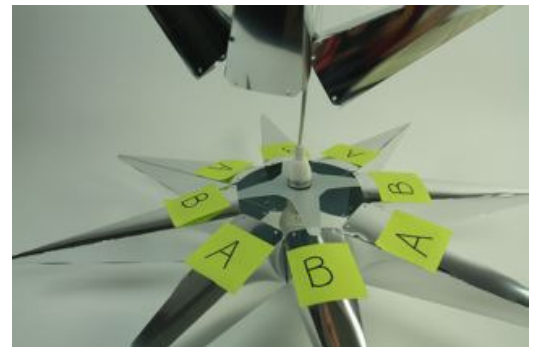
Instructions: Star Pendant Lamp



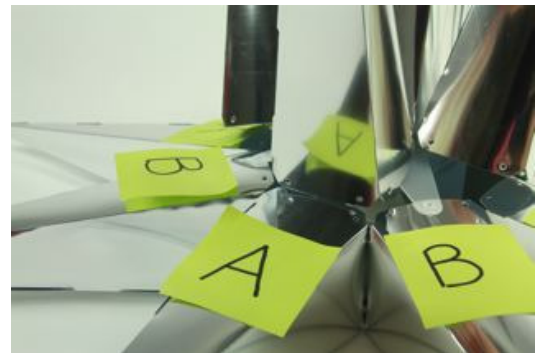
9. Insert pin facing downwards into all arms of “support frame” . Ensure pins are locked into place.



10. Lay “middle section” on flat surface ensuring “B” cones have sides with 3 holes facing up. Lower “upper section” of star pendant over “middle section” and align to insert pins in “support frame” into middle holes of “B” cone pieces.



11. Join “upper section” of star pendant to “A” cone pieces of “middle section” with pins as per Step 3 .



- NB. To join pins insert from inside outside of first piece, then out to in on joining piece.



Instructions: Star Pendant Lamp



13. **Flip assembly over. Join “bottom section” to “middle section” at “B” cones using pins as per Step 11.**



14. **Have electrician install and make your friends envious.**

